

Ginninderra Catchment Group

(Over 500 Volunteers)
Peter Davey Convenor

- Landcare

Kelly Behrens



- Frogwatch

Anke Maria Hoefler



- Waterwatch/LGCRRP

Damon Cusack



GCG History of Innovation

- Ginninderra **Catchment Group** formed in 1996. Some years later Molonglo (2003) and Southern ACT Catchment (2002) groups are formed based on this model and resulting from the success of that model.
- GCG implements a water quality monitoring project *Waterwatch at a Catchment scale*. The project expands to ACT and Region and remains the most successful community science programs in the region.
- In 1998 GCG begins monitoring frogs at a few local sites. *Frogwatch* is born and in 2010 the GCG run Frogwatch Census has grown to over 200 volunteers monitoring over 340 sites (439 observations) from Yass to Cooma and everywhere in between.
- The *Bush on the Boundary* concept, hosted by GCG, starts in 2004 (MBUI) and remains a significant reference group for the developing suburbs of Forde and Bonner. Molonglo CG forms a BOB group in 2010 based on the successful GCG model
- GCG Develops ‘Managing Horses on Small Properties’ Seminars 2010. In 2 years there has now been over 10 seminars hosted throughout the ACT and Region and 100’s of small property managers engaged in Catchment Care



Landcare/Parkcare

Dunlop Environment Volunteers

Macgregor Landcare Group

Umbagog Landcare Group

North Belconnen Landcare Group

Giralang Pond Landcare Group

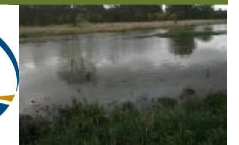
Mount Rogers Landcare Group

Holt Community Park Carers

Friends of Aranda Bushland

Friends of Mt Painter

Friends of the Pinnacle



Frogwatch

Seminars and Fieldtrips

- Seminars and Fieldtrips are supported by regional frog experts
- 4 Introductory Seminars 70 participants per seminar
- 2 Refresher seminars
- 3 field trips planned for 2012



Frogwatch School Education



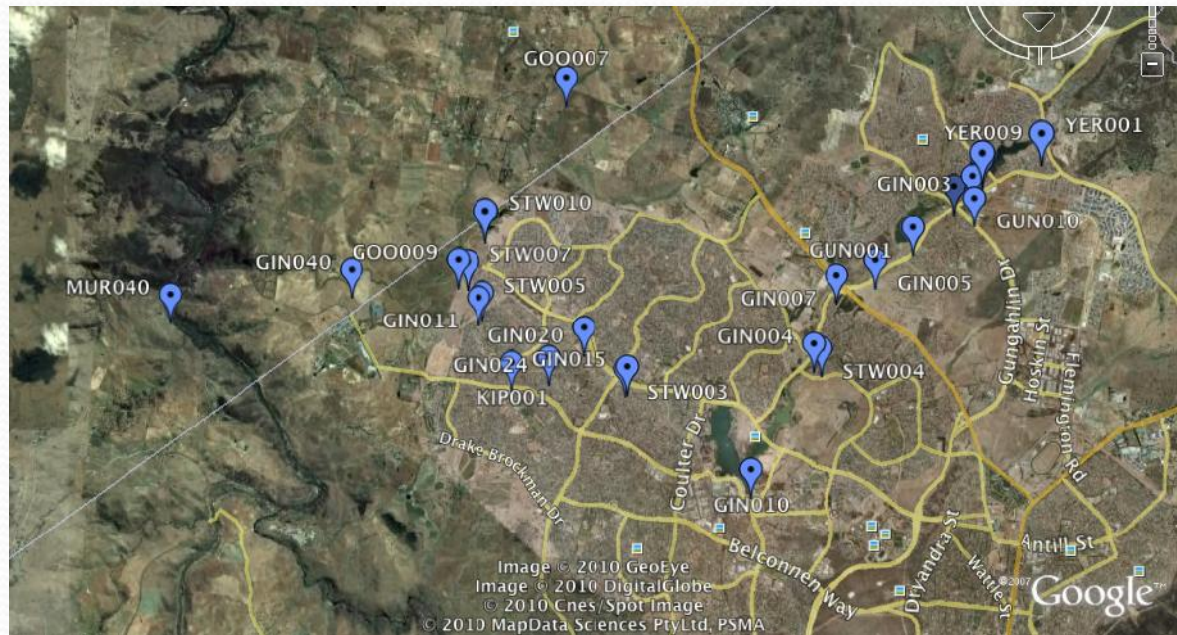
- School visits
- Lesson plans
- Tadpole kits (funded by ACT HA)
- Frogs For The Future
- Corporate Support

Green and Golden Bell Frog
Litoria aurea



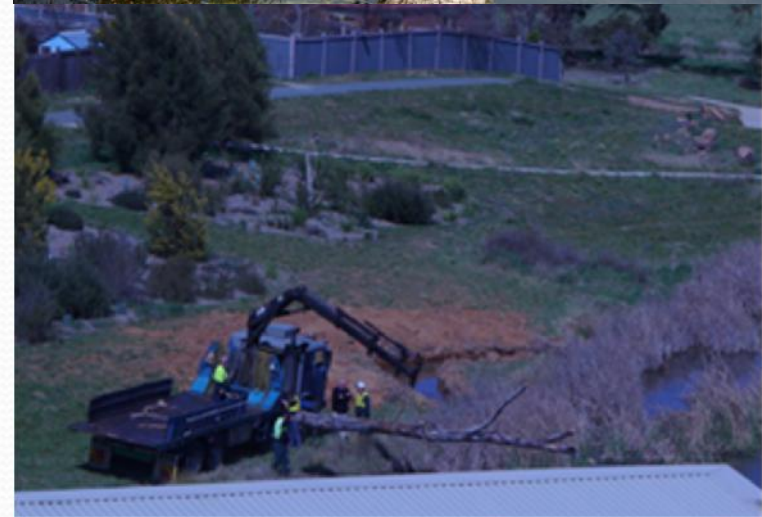
Ginninderra Waterwatch Sites

- 3 sub-catchments
- 32 sites
- Average of 22 sites monitored each month
- Seasonal Macroinvertebrate, Riparian and Photo-point assessment
- Over 400 recording sheets per year



On Ground Works

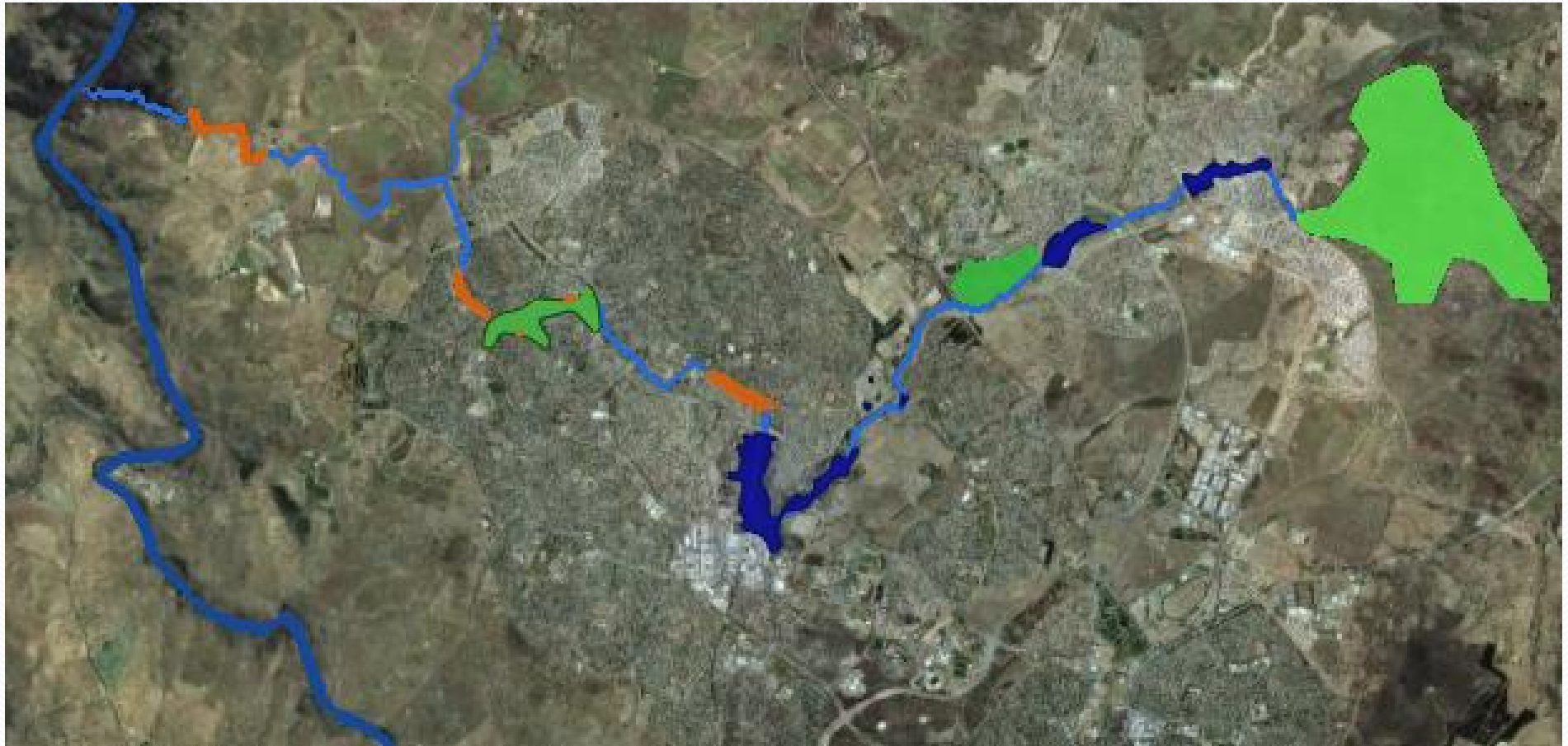
- Habitat Assessment
- Community engagement
- Identify trouble spots
- Develop solutions
- Undertake remedial action
- Monitor response to action
- Report



High Flow



Ginninderra Creek Corridor



Lower Ginninderra Creek Riparian Restoration Project LGCRRP

Two sections

❖ 1 Year NSW Willow Removal, Fencing and Revegetation

\$ 76,892 Funded by DAFF

❖ 2 Year ACT Woody Weed Removal and Habitat Revegetation

\$ 58,192 Funded by CFOC and ACT Government



CARING
FOR
OUR
COUNTRY



LGCRRP ACT

- 55 truckloads of woody weeds
- 7 kms of weed mapping/surveying
- 4 kms of control works
- 600 shrubs and grasses (3000-4000)



Macgregor LG

Umbagog LG

North Belconnen LG

Conservation Volunteers Aus

National Green Jobs Corps

ACT Gov (PCS & Place management)

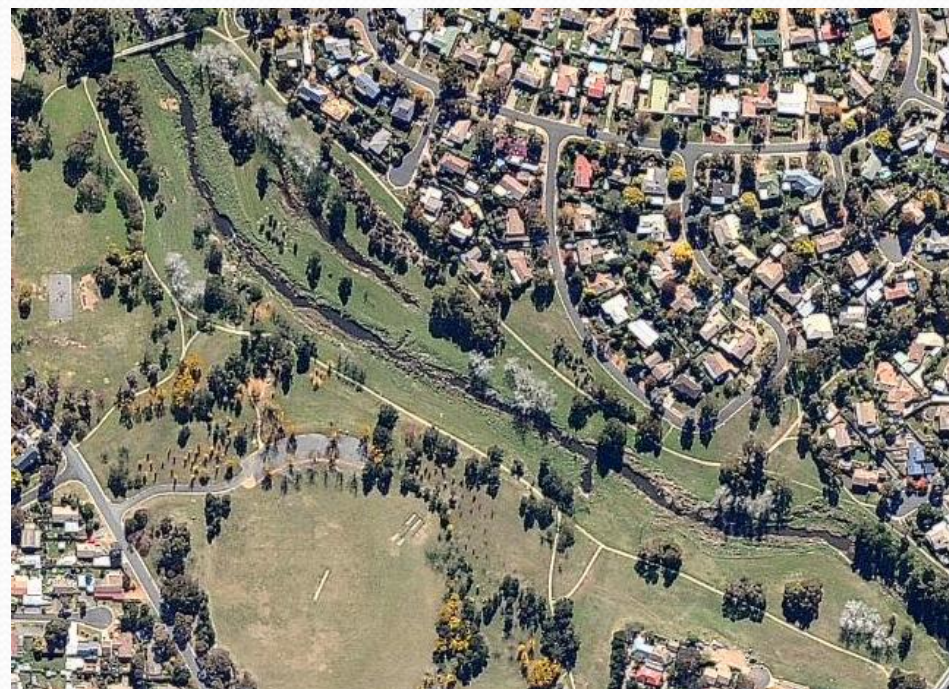
Greening Australia



LGCRRP ACT



January 2010



May 2012



LGCRRP ACT



January 2010



May 2012



Not Long To Wait



2002

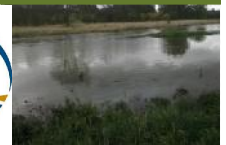


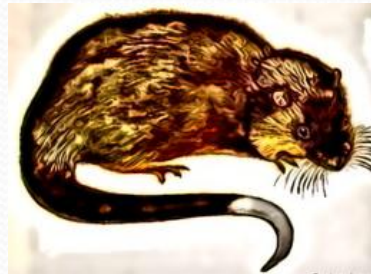
2010



LGCRRP NSW

- Sub-contracted - Greening Australia
- 2kms of Willow Control (approx)
- Fencing 2.03km
- Stock watering points 5
- Reveg approx. 3ha





Communities Caring for Catchments

